

# Tennessee Grief Support Programs

YOU DON'T HAVE TO GRIEVE ALONE.

HeartLight Center is a non-profit that companions and educates people through their grief to find hope. HeartLight offers virtual support groups, workshops, seminars and resources for individuals who are grieving a death loss of any kind.



## ONGOING DROP-IN GRIEF SUPPORT GROUPS:

Open, drop-in groups invite people to come together with those who have similar losses. Participants may attend as often or as little as needed and discussions are personalized to fit the needs of each group.

Scan to Register or  
Learn More:



### GENERAL GRIEF GROUP: OPEN SUPPORT FOR ALL GRIEF

Upcoming dates: Wed. July 2, Aug 6, Sept 3 | 4:00-5:30 PM | Smith Professional Building

This ongoing support group is open to anyone who has experienced a death, open to all types of losses and timelines.

Meets in-person on the first Wednesday monthly.

### LOSS OF A SPOUSE/PARTNER

Upcoming dates: Wed. July 16, Aug 20, Sept 17 | 4:00-5:30 PM | Smith Professional Building

An ongoing peer support and educational group for people who have experienced the death of a spouse, partner or significant other.

Regardless of how long ago the death occurred, you are welcome to attend. Meets monthly on the third Wednesday.

## TWO SPECIAL PRESENTATIONS BY: DR. JASON TROYER

### A Program for Bereaved Individuals & Those Who Support Them: Throwing Out the Rules: Why Most Grief Advice is Wrong

Sept. 16 | 7-8:30 PM | Smith Life Event Center - 1410 Tuckaleechee Pike Maryville, TN 37803

Grief doesn't follow a schedule, a set of stages, or tidy rules—and yet so much of the advice given to the bereaved is rigid, outdated, or just plain wrong. This candid & compassionate session challenges common grief myths and offers a more honest, and human approach to healing. Attendees will leave with validation for their unique experience and practical ideas for coping that actually honor their loss.



### Program for Professionals:

### A Shared Calling a Shared Burden: Avoiding Burnout & Seamlessly Caring for Families

Sept. 17 | 9-11:00 AM | Smith Life Event Center - 1410 Tuckaleechee Pike Maryville, TN 37803

This seminar unites clergy, hospice staff, therapists, & other end-of-life professionals to foster better collaboration & mutual support. We'll explore the emotional impact of this work, learn to recognize signs of burnout, & discuss strategies to stay resilient. Through improved communication & coordination, we'll ensure that families experience care that is seamless, compassionate, and complete. A certificate of completion will be provided.



HeartLight



Website

720-748-9908

info@heartlightcenter.org

www.heartlightcenter.org



HeartLight  
Center



## VIRTUAL PROGRAMS

### ONGOING DROP-IN GRIEF SUPPORT GROUPS:

Open, drop-in groups invite people to come together with those who have similar losses. Participants may attend as often or as little as needed and discussions are personalized to fit the needs of each group.

Scan to Register or  
Learn More:



#### GENERAL GRIEF GROUP – OPEN SUPPORT FOR ALL GRIEF:

##### **General Grief Group**

Meets monthly on the first Wednesday

5pm PT / 6pm MT / 7pm CT / 8pm ET

##### **General Grief Group**

Meets monthly on the third Tuesday

3pm PT / 4pm MT / 6pm CT / 6pm ET

#### LOSS OF A SPOUSE OR PARTNER:

##### **Loss of Spouse/Partner**

Meets monthly on the second Wednesday

5pm PT / 6pm MT / 7pm CT / 8pm ET

#### LOSS OF A PARENT/CAREGIVER:

##### **Loss of a Parent(s)**

Meets monthly on the second Wednesday

5pm PT / 6pm MT / 7pm CT / 8pm ET

##### **Loss of a Parent(s)**

Meets monthly on the fourth Wednesday

5pm PT / 6pm MT / 7pm CT / 8pm ET

#### SUDDEN & TRAUMATIC GRIEF SUPPORT GROUPS:

##### **Suicide Loss Grief Support**

Meets monthly on the second Thursday

5pm PT / 6pm MT / 7pm CT / 8pm ET

Starting in July! Meets monthly on the fourth Thursday

3pm PT / 4pm MT / 5pm CT / 6pm ET

##### **Substance Loss Grief Support**

Meets monthly on the fourth Thursday

6pm PT / 7pm MT / 8pm CT / 9pm ET

##### **Sudden & Traumatic Loss Grief Support**

Meets monthly on the fourth Tuesday

5:30pm PT / 6:30pm MT / 7:30pm CT / 8:30 ET

##### **Homicide Loss (Meets Quarterly)**

Meeting: March 11, June 10, September 9 and December 9

3pm PT / 4pm MT / 5pm CT / 6pm ET

#### GRIEF SUPPORT FOR SPECIFIC POPULATIONS:

##### **LGBTQ+ Grief Support**

Meets monthly on the second Monday

4pm PT / 5pm MT / 6pm CT / 7pm ET

##### **Young Adults Grief Support**

Meets monthly on the third Monday

5pm PT / 6pm MT / 7pm CT / 8pm ET

##### **Family Caregiver Circle**

Meets monthly on the first Thursday

4pm PT / 5pm MT / 6pm CT / 7 ET

HeartLight



Website

720-748-9908

info@heartlightcenter.org

www.heartlightcenter.org

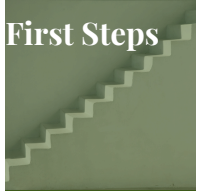


Smith  
LIFE & LEGACY

HeartLight  
Center



## SEMINARS:



### FIRST STEPS

Upcoming Dates: July 16, Aug 20 | 11am PT/ 12pm MT/ 1pm CT/ 2pm ET

Get help handling tasks and finances after a death, understanding what documents you'll need and how to get them, closing accounts and filing claims.



## WEEKLY CLOSED GROUP SUPPORT:

Weekly, closed-group series follow a pre-defined curriculum to help guide group discussions and topics for each meeting.



### THE GRIEVING BRAIN SUPPORT GROUP & BOOK CLUB 5-SESSION GROUP

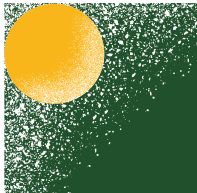
Thurs. July 17, 31, August 14, 28, September 11 | 4:30pm PT/ 5:30pm MT/ 6:30pm CT/ 7:30pm ET

We will navigate the complexities of grief while reading and discussing "The Grieving Brain" by Mary-Frances O'Connor. Cost: \$50, does not include copy of the book.



## SPECIAL GRIEF WORKSHOPS:

Educational and experiential workshops that explore various topics, methods for coping, and activities for anyone who has had a loss. Workshops are offered as a series or one time program.



### GOAL SETTING IN THE NEW YEAR: A MID-YEAR CHECK-IN

Sat. July 19th | 8:30am PT/9:30am MT/10:30am CT/11:30am ET

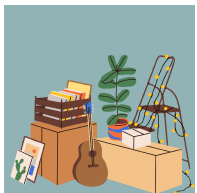
A follow-up from the "Goal Setting in the New Year" workshop. Get some support and check-in intentionally with our goals and self-care needs. We will discuss progress and self-compassion, coping strategies and self-care needs, and check-in with ourselves, our goals and each other.



### OPEN HEART STUDIO ONLINE

Sat. Aug 2 | 9-11:00am PT/ 10-12:00pm MT/ 11-1:00pm CT/ 12-2pm ET

This online creative gathering will instruct the use of materials found in the home to explore our grief through use of various art activities, no prior art experience required. Cost: \$30.



### TOOLS FOR HANDLING PERSONAL BELONGINGS AFTER LOSS

Sat August 16 | 9-11:00am PT/ 10-12:00pm MT/ 11-1:00pm CT/ 12-2pm ET

What do we do with the "stuff"? Join us for discussions about handling belongings after a loss, useful tools to help with sorting through the belongings, determining what to keep and what to donate, and what it is to part with certain pieces of our person's physical life. Cost: \$20.



HeartLight



Website

720-748-9908

info@heartlightcenter.org

www.heartlightcenter.org

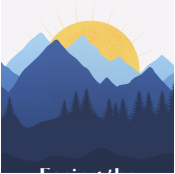




## TRAINING AND EDUCATION

### FACING THE MOURNING FACILITATOR TRAINING:

Learn to facilitate our signature 4-session interactive support group open to all types of losses to bring to your community or organization. (For Professionals).



#### FACING THE MOURNING FACILITATOR TRAINING

Upcoming Dates: Fri. July 18, September 19

Start Time: 10am PT/ 11am MST/ 12pm CT/ 1pm ET

Cost: \$90



### RESOURCES:

Resources for those who have experienced a loss as well as professionals supporting someone who has experienced a loss. Learn more by scanning the QR code.

#### Recommended Grief Media:

- Book List
- Podcasts
- Websites
- Videos

#### Topic Specific Grief Brochures & Handouts:

- Helping Someone Who is Grieving
- Helpful Information About Grief
- Why Are The Holidays So Hard?
- What Can I Do About My Grief?
- Supporting Grieving Kids
- Individual vs. Group Support
- Loss in the Work Place



*YOU DON'T HAVE TO GRIEVE ALONE.*

HeartLight Center is a non-profit that companions and educates people through their grief to find hope. HeartLight offers support groups, workshops, seminars and resources for individuals who are grieving a death loss of any kind.

HeartLight



Website

720-748-9908

info@heartlightcenter.org

www.heartlightcenter.org



*Smith*  
LIFE & LEGACY

HeartLight  
Center

## MY PROGRAM CALENDAR:

Please use this space to mark down any events that interest you. Feel free to contact us with any questions.

We look forward to seeing you soon.

Sunday	Monday	Tuesday	Wednesday	Thursday	Friday	Saturday
July		1	2	3	4	5
6	7	8	9	10	11	12
13	14	15	16	17	18	19
20	21	22	23	24	25	26
27	28	29	30	31		

Sunday	Monday	Tuesday	Wednesday	Thursday	Friday	Saturday
August					1	2
3	4	5	6	7	8	9
10	11	12	13	14	15	16
17	18	19	20	21	22	23
24	25	26	27	28	29	30
31						

