

New Mexico Grief Support Programs

YOU DON'T HAVE TO GRIEVE ALONE.

HeartLight Center is a non-profit that companions and educates people through their grief to find hope. HeartLight offers virtual support groups, workshops, seminars and resources for individuals who are grieving the loss of any kind.



IN-PERSON PROGRAMS MONTHLY GRIEF SUPPORT GROUPS:

GENERAL GRIEF GROUP – GROWING THROUGH GRIEF

Upcoming dates: Wed. Dec 4, Feb 5 | 6:00 PM | UrbanMama505 Kombuchery - 1014 Central Ave SW, Studio A, Albuquerque, NM 87102

An ongoing peer support and educational group for people who have experienced a death loss. Regardless of how long ago the death occurred, you are welcome to attend, helpful for those who are newly bereaved and/or new to our program. Meets monthly on the first Wednesday at UrbanMama505 Kombuchery. *No meeting in January due to the New Years holiday.

LOSS OF A SPOUSE/PARTNER

Upcoming dates: Mon. Dec 2, Jan 6, Feb 3 | 5:30 PM | Daniels Family Funerals-Wyoming Chapel, 7601 Wyoming Blvd NE, Albuquerque, NM 87109

An ongoing peer support and educational group for people who have experienced the death of a spouse, partner or significant other. Regardless of how long ago the death occurred, you are welcome to attend. Meets monthly on the first Monday at Daniel's Wyoming.

SUDDEN & TRAUMATIC LOSS GROUP

Upcoming dates: Wed. Dec 11, Jan 8, Feb 12 | 5:30 PM | Daniels Family Funerals-Carlisle, 3113 Carlisle Blvd NE, Albuquerque, NM 87110

An ongoing peer support and educational group for people who have experienced an unexpected, sudden, traumatic loss (including but not limited to accidental death, suicide, homicide, etc). Regardless of how long ago the death occurred, you are welcome to attend. Meets monthly on the second Wednesday at Daniels-Carlisle.

GRIEF SUPPORT SPECIAL EVENTS:



HOLIDAY LOVE & LIGHT: A REMEMBRANCE EVENT & CANDLE LIGHTING

Dec 17 | 5:30-7:30 PM | Daniels-Carlisle
3113 Carlisle Blvd NE, Albuquerque, NM 87110

Join us for our family-friendly holiday memorial service and candle lighting ceremony. The program will be followed by time for fellowship and memorial ornament crafts. Refreshments will be served. All faiths welcome.



LIGHTING THE WAY: LUMINARIA REMEMBRANCE EVENT

Dec 24 | 10:00 AM-2:00 PM | Gabaldon Mortuary
1000 Old Coors Dr SW, Albuquerque, NM 87121

Join us for a special day of remembrance with Gabaldon Mortuary. Create luminaria bags to honor loved ones and connect with others in a warm, supportive community.



Comfort Food Dinner

Thurs. Jan 16 | 5:30-7:30 PM | Bosque Trails Hospice
303 San Mateo Blvd NE, Suite 104, Albuquerque, NM 87108

We will serve comforting food and create a space for sharing experiences, meals, and beverages. While bringing a dish is not required or expected, you are welcome to contribute if it feeds your wellbeing. In partnership with Bosque Trails Hospice.



HeartLight



Website

720-748-9908

info@heartlightcenter.org

www.heartlightcenter.org



COMMUNITY EVENTS UPCOMING REMEMBRANCE SERVICES

Daniels Family Funeral Services - Garcia Mortuary:

Dec 10 | 6:00 PM | 717 Stover Ave SW, Albuquerque, NM 87102

Call for more information & to RSVP: (505) 243-5222

Daniels Family Funeral Services - Socorro Chapel:

Dec 11 | 7:00 PM | 309 Garfield Ave, Socorro, NM 87801

Call for more information & to RSVP: (575) 835-1530

Daniels Family Funeral Services - Wyoming Chapel:

Dec 12 | 6:00 PM | 7601 Wyoming Blvd NE, Albuquerque, NM 87109

Call for more information & to RSVP: (505) 821-0010

DeVargas Funeral Home - Espanola:

Dec 15 | 4:00 PM | 623 North Railroad Ave, Espanola, NM 87532

Call for more information & to RSVP: 505-747-7477

Daniels Family Funeral Services - Southern Chapel:

Dec 18 | 2400 Southern Blvd SE, Rio Rancho, NM 87124

Call for more information & to RSVP: (505) 891-9192



720-748-9908

info@heartlightcenter.org

www.heartlightcenter.org

Website





VIRTUAL PROGRAMS

MONTHLY GRIEF SUPPORT GROUPS:

GROWING THROUGH GRIEF

Upcoming Dates: Wed. Dec 4, Feb 5 | 6pm PT / 7pm MST / 8pm CT / 9pm ET

Tues. Dec 17, Jan 21, Feb 18 | 3pm PT / 4pm MST / 6pm CT / 6pm ET

An ongoing peer support and educational group for people who have experienced a death loss, at any time and of any relationship. Helpful for those who are newly bereaved and/or new to our program. Meets monthly on the first Wednesday (7pm MST) and third Tuesday (4pm MST).

LOSS OF SPOUSE/PARTNER

Upcoming Dates: Wed. Dec 11, Jan 8, Feb 12 | 5pm PT / 6pm MST / 7pm CT / 8pm ET

An ongoing peer support and educational group for people who have experienced the death of a spouse, partner or significant other. Regardless of how long ago the death occurred, you are welcome to attend. Meets monthly on the second Wednesday.

LOSS OF A PARENT(S)

Upcoming dates: Mon. Dec 2, Jan 6, Feb 3 | 6pm PT / 7pm MST / 8pm CT / 9pm ET

An ongoing peer support and educational group for people who have experienced the death of a parent or adult caregiver. Regardless of how long ago the death occurred, you are welcome to attend. Meets monthly on the first Monday at 7pm (MST) and third Monday monthly at 6pm (MST).

LGBTQ+ GRIEF SUPPORT GROUP

Upcoming dates: Mon. Dec 9, Jan 13, Feb 10 | 4pm PT / 5pm MST / 6pm CT / 7pm ET

An ongoing peer support and educational group for adult members of the LGBTQIA+ community who have experienced a death loss. Regardless of relationship or how long ago the death occurred, you are welcome to attend. Meets monthly on the second Monday.

YOUNG ADULTS GRIEF SUPPORT GROUP

Upcoming dates: Mon. Dec 16, Jan 20, Feb 17 | 5pm PT / 6pm MST / 7pm CT / 8pm ET

An ongoing peer support and educational group for individuals 18-25 years of age who have experienced a death loss. Regardless of relationship or how long ago the death occurred, you are welcome to attend. Meets monthly on the third Monday.

SUICIDE LOSS GRIEF SUPPORT

Upcoming dates: Thurs. Dec 12, Jan 9, Feb 13 | 5pm PT / 6pm MST / 7pm CT / 8pm ET

An ongoing peer support and educational group for people who have experienced a suicide death-loss. Regardless of relationship or how long ago the death occurred, you are welcome to attend. Meets monthly on the second Thursday.

SUBSTANCE LOSS GRIEF SUPPORT GROUP

Upcoming Dates: Thurs. *Dec 19, Jan 23, Feb 27 | 6pm PT / 7pm MST / 8pm CT / 9pm ET

An ongoing peer support and educational group for people who have experienced a death loss where substance use, abuse or overdose are part of the life or death narrative. Regardless of how long ago the death occurred, you are welcome to attend. Meets monthly on the fourth Thursday. *Please note: This group is not appropriate for individuals who are currently dealing with substance abuse. **Please note date change for December meeting.

SUDDEN & TRAUMATIC LOSS GRIEF SUPPORT GROUP

Upcoming dates: Tues. Dec *23, Jan 28, Feb 25 | 5:30pm PT / 6:30pm MST / 7:30pm CT / 8:30 ET

An ongoing peer support and educational group for people who have experienced an unexpected, sudden, traumatic loss (including but not limited to accidental death, suicide, homicide, etc). Regardless of how long ago the death occurred, you are welcome to attend. Meets monthly on the fourth Tuesday. *Please note December date change due to the Christmas Eve holiday.

NEW! CAREGIVER SUPPORT GRIEF GROUP

Upcoming dates: Thurs. Jan 2, Feb 6 | 4pm PT / 5pm MST / 6pm CT / 7 ET

If you are a caregiver, or have lost someone you cared for, you are invited to attend our new monthly ongoing peer support and educational group for caregivers. We will share about experiences, ideas and support for current and past caregivers. Meets monthly on the first Thursday.



720-748-9908

info@heartlightcenter.org

www.heartlightcenter.org

Website





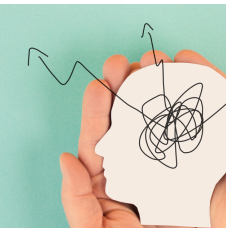
VIRTUAL PROGRAMS CONT. CONSISTENT WEEKLY SUPPORT:



FACING THE MOURNING 4-WEEK SUPPORT GROUP

An interactive 4-session support group designed to help with the grieving process by using visual and thought-provoking tools. Cost: \$65 plus shipping.

Dec dates: Mon. Dec 2, 9, 16, & 23 or 30 | 4:30pm PT/5:30pm MST/6:30pm CT/7:30pm EST
Feb dates: Thurs. Feb 6, 13, 20 & 27 | 10am PT/11am MST/12pm CT/1pm EST



THE GRIEVING BRAIN SUPPORT GROUP & BOOK CLUB 5-SESSION GROUP

Join us for a unique combination of virtual peer support and education in this closed, curriculum-based support group. We will navigate the complexities of grief while reading and discussing "The Grieving Brain" by Mary-Frances O'Connor. Cost: \$40.

Jan 23, Feb 6, Feb 20, Mar 6, Mar 20 | 4:30pm PT/5:30pm MST/6:30pm CT/7:30pm EST



SEMINARS:



FIRST STEPS

Get help handling tasks and finances after a death, understanding what documents you'll need and how to get them, closing accounts and filing claims.

Upcoming Dates: Dec 4, 18, Jan 8
Start Time: 5pm PT/ 6pm MST/ 7pm CT/ 8pm EST



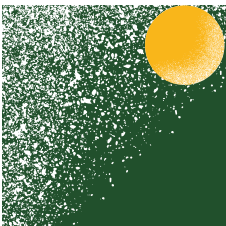
SPECIAL GRIEF WORKSHOPS:



GRIEF & THE HOLIDAYS

Sat. Dec 14
8:30am(PT) / 9:30am(MT) / 10:30am(CT) / 11:30am(ET) | On Zoom

No matter what you celebrate, it's important to know that you aren't alone during holidays. This virtual workshop is a way to get some support and helpful tips when grieving around the holiday season. Suggested Donation: \$20.



GRIEF AFTER THE HOLIDAYS: TENDING TO OUR GOALS

Sat. Jan 25
8:30am(PT) / 9:30am(MT) / 10:30am(CT) / 11:30am(ET) | On Zoom

For anyone who has attended a Grief and the Holidays workshop or any Facing the Mourning group. Get support and helpful tips around transitioning into a new year with grief and tending to the goals we have set or want to set in the new year. Cost: \$20



HeartLight



Website

720-748-9908

info@heartlightcenter.org

www.heartlightcenter.org





TRAINING AND EDUCATION

UPCOMING EDUCATIONAL SIGNATURE SERIES:

HeartLight hosts experts to speak on various grief and loss topics throughout the year.
Seminars are presentational and all are invited to learn.



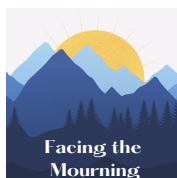
**Program for Professionals Supporting for LGBTQ+ Individuals:
LGBTQ+ Grief Care Considerations**
January 21st | 8am (PT)/ 9am (MST)/ 10am (CT)/ 11am (EST)

**Program for LGBTQ+ Community, Peers and Allies:
Processing Group for and about LGBTQ+ Grief**
January 21st | 4pm (PT)/ 5pm (MST)/ 6pm (CT)/ 7pm (EST)



FACING THE MOURNING FACILITATOR TRAINING:

Learn to facilitate our signature 4-session interactive support group open to all types of losses to bring to your community or organization.



Facing the Mourning Facilitator Training- For Professionals

Upcoming Dates: Fri. Jan 31
Start Time: 10am PT/ 11am MST/ 12pm CT/ 1pm ET
Cost: \$85



RESOURCES:

Resources for those who have experienced a loss as well as professionals supporting someone who has experienced a loss. Learn more by scanning the QR code.

Recommended Grief Media:

- Book List
- Podcasts
- Websites
- Videos

HeartLight Academic Articles

- Help Someone who is Grieving
- Helpful Info About Grief
- Self-Care While Grieving
- Individual vs. Group Support
- Loss in the Work Place
- When Kids are Grieving



720-748-9908
info@heartlightcenter.org
www.heartlightcenter.org

