

Western-Slope Grief Support Programs

YOU DON'T HAVE TO GRIEVE ALONE.

HeartLight Center is a non-profit that companions and educates people through their grief to find hope. HeartLight offers virtual support groups, workshops, seminars and resources for individuals who are grieving the loss of any kind.



IN- PERSON PROGRAMS MONTHLY GRIEF SUPPORT GROUPS:

GENERAL GRIEF GROUP - GROWING THROUGH GRIEF

Upcoming dates: Thurs. Nov 21, Dec 26 | 6 PM | Brown's Funeral Service - 904 N. 7th St. Grand Junction, CO 81501

An ongoing peer support and educational group for people who have experienced a death loss. Regardless of how long ago the death occurred, you are welcome to attend, helpful for those who are newly bereaved and/or new to our program. Meets monthly on the last Thursday of the month at Brown's Funeral Home. **Please note date change in November meeting due to Thanksgiving Holiday.

COMFORT FOOD, COMFORTING HEARTS POTLUCK

Upcoming dates: Wed. Nov 13, Dec 11 | 11:00 AM | HopeWest Delta Office - 195 Stanford Lane, Delta CO 81416

A monthly dinner gathering to connect with other adults who have experienced the loss of a special person in their life. Please bring a (simple!) dish to share! Registration strongly encouraged to ensure that all who attend can share in the meal. Table settings and beverages will be provided. Meets monthly on the second Wednesday, in partnership with HopeWest.

LOSS OF SPOUSE POTLUCK

Upcoming dates: Wed. Nov 20, Dec 18 | 6 PM | Brown's Funeral Service - 904 N. 7th St. Grand Junction, CO 81501

A monthly dinner gathering to connect with others who have experienced the loss of a spouse, partner, or significant other. Please bring a (simple) dish to share! Table settings and water will be provided. Meets monthly on the 3rd Wednesday at Brown's Funeral Home.

YOUNG LOSS OF A SPOUSE/PARTNER GROUP

Upcoming dates: Thurs. Dec 19 | 6 PM | Please contact Carrie for group location cbauer@heartlightcenter.org

An ongoing peer support and educational group for people who are 55 and younger who have experienced the death of a spouse, partner or significant other. Regardless of how long ago the death occurred, you are welcome to attend. Meets monthly on the third Thursday in Delta. *Please note: no meeting in November due to the Thanksgiving holiday.

COFFEE & CONVERSATION

Upcoming Dates: Fri. Nov 22 | 10:00 AM | Be Sweet Café & Bakeshop - 150 W Main St, Grand Junction, CO 81501

Join us for coffee and casual grief support group. Group is open to all adults, regardless of type of loss. Food and beverage available for purchase at Be Sweet. Meets the 4th Friday monthly.



720-748-9908

info@heartlightcenter.org

www.heartlightcenter.org

Website



IN- PERSON PROGRAMS CONT. SPECIAL GRIEF WORKSHOPS:



GRIEF & THE HOLIDAYS

Wed. Nov 20 | 6 PM | Taylor's Funeral Service (Delta)

Thurs. Nov 21 | 6 PM | Brown's Cremation & Funeral (Grand Junction)

No matter what you celebrate, it's important to know that you aren't alone during holidays. This workshop is a way to get some support and helpful tips when grieving around the holiday season. Suggested Donation: \$20.



TAYLOR'S LIGHTS OF LIFE

Thurs. Dec 5 | 6 PM | Taylor's Funeral Service (Delta)

In partnership with HopeWest and Taylor's Funeral Service, please join us for our holiday memorial service and candle lighting ceremony. Refreshments will be served. For questions or to RSVP, please contact Taylor's Funeral Service 970-874-9988 or HopeWest at 970-874-6823.



CRIPPIN'S HOLIDAY LOVE, HOPE AND LIGHT: A TIME OF REMEMBRANCE CANDLE LIGHTING CEREMONY

Thurs. Dec 10 | 6 PM | Crippin Funeral Home (Montrose)

Please join us for our holiday memorial service and candle lighting ceremony, in partnership with Crippin Funeral Home. Refreshments will be served.



BROWN'S HOLIDAY LOVE, HOPE AND LIGHT: A TIME OF REMEMBRANCE CANDLE LIGHTING CEREMONY

Thurs. Dec 19 | 6 PM | Brown's Cremation & Funeral (Grand Junction)

Please join us for our holiday memorial service and candle lighting ceremony, in partnership with Brown's Cremation & Funeral. Refreshments will be served.



HeartLight



Website

720-748-9908

info@heartlightcenter.org

www.heartlightcenter.org

HeartLight
Center



VIRTUAL PROGRAMS MONTHLY GRIEF SUPPORT GROUPS:

GROWING THROUGH GRIEF

Upcoming Dates: Wed. Nov 6, Dec 4 | 6pm PT / 7pm MST / 8pm CT / 9pm ET

Tues. Nov 19, Dec 17 | 3pm PT / 4pm MST / 6pm CT / 6pm ET

An ongoing peer support and educational group for people who have experienced a death loss, at any time and of any relationship. Helpful for those who are newly bereaved and/or new to our program. Meets monthly on the first Wednesday (7pm MST) and third Tuesday (4pm MST).

LOSS OF SPOUSE/PARTNER

Upcoming Dates: Wed. Nov 13, Dec 11 | 5pm PT / 6pm MST / 7pm CT / 8pm ET

An ongoing peer support and educational group for people who have experienced the death of a spouse, partner or significant other. Regardless of how long ago the death occurred, you are welcome to attend. Meets monthly on the second Wednesday.

LOSS OF A PARENT(S)

Upcoming dates: Mon. Nov 4, Dec 2 | 6pm PT / 7pm MST / 8pm CT / 9pm ET

An ongoing peer support and educational group for people who have experienced the death of a parent or adult caregiver. Regardless of how long ago the death occurred, you are welcome to attend. Meets monthly on the first Monday.

SUICIDE LOSS GRIEF SUPPORT

Upcoming dates: Thurs. Nov 14, Dec 12 | 6pm PT / 7pm MST / 8pm CT / 9pm ET

An ongoing peer support and educational group for people who have experienced a suicide death-loss. Regardless of relationship or how long ago the death occurred, you are welcome to attend. Meets monthly on the second Thursday.

*Please note new meeting start time starting October, 2024.

LGBTQ+ GRIEF SUPPORT GROUP

Upcoming dates: Mon. Nov 11, Dec 9 | 4pm PT / 5pm MST / 6pm CT / 7pm ET

An ongoing peer support and educational group for adult members of the LGBTQIA+ community who have experienced a death loss. Regardless of relationship or how long ago the death occurred, you are welcome to attend. Meets monthly on the second Monday.

YOUNG ADULTS GRIEF SUPPORT GROUP

Upcoming dates: Mon. Nov 18, Dec 16 | 5pm PT / 6pm MST / 7pm CT / 8pm ET

An ongoing peer support and educational group for individuals 18-25 years of age who have experienced a death loss. Regardless of relationship or how long ago the death occurred, you are welcome to attend. Meets monthly on the third Monday.

SUBSTANCE LOSS GRIEF SUPPORT GROUP

Upcoming Dates: Thurs. *Nov 21, *Dec 19 | 6pm PT / 7pm MST / 8pm CT / 9pm ET

An ongoing peer support and educational group for people who have experienced a death loss where substance use, abuse or overdose are part of the life or death narrative. Regardless of how long ago the death occurred, you are welcome to attend. Meets monthly on the fourth Thursday. *Please note: This group is not appropriate for individuals who are currently dealing with substance abuse. **Please note date change for November & December meetings due to holidays.

SUDDEN & TRAUMATIC LOSS GRIEF SUPPORT GROUP

Upcoming dates: Tues. Nov 26, Dec *23 | 5:30pm PT / 6:30pm MST / 7:30pm CT / 8:30 ET

An ongoing peer support and educational group for people who have experienced an unexpected, sudden, traumatic loss (including but not limited to accidental death, suicide, homicide, etc). Regardless of how long ago the death occurred, you are welcome to attend. Meets monthly on the fourth Tuesday. *Please note December date change due to the Christmas Eve holiday.



720-748-9908

info@heartlightcenter.org

www.heartlightcenter.org

Website





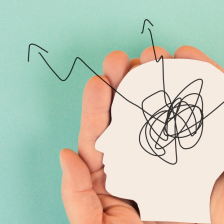
VIRTUAL PROGRAMS CONT. CONSISTENT WEEKLY SUPPORT:



FACING THE MOURNING 4-WEEK SUPPORT GROUP

An interactive 4-session support group designed to help with the grieving process by using visual and thought-provoking tools. Cost: \$65 plus shipping.

Dec dates: Mon. Dec 2, 9, 16, & 23 or 30
4:30pm PT/5:30pm MST/6:30pm CT/7:30pm EST



THE GRIEVING BRAIN SUPPORT GROUP & BOOK CLUB 5-SESSION GROUP - FULL! JOIN THE WAITLIST

Join us for a unique combination of virtual peer support and education in this closed, curriculum-based support group. We will navigate the complexities of grief while reading and discussing "The Grieving Brain" by Mary-Frances O'Connor. Cost: \$40.

Thurs. Nov 7, 14, 21, Dec 5, & 10 | 4:30pm PT/5:30pm MST/6:30pm CT/7:30pm EST



SEMINARS:



FIRST STEPS

Get help handling tasks and finances after a death, understanding what documents you'll need and how to get them, closing accounts and filing claims.

Upcoming Dates: Nov 6, 20, Dec 4, 18
Start Time: 5pm PT/ 6pm MST/ 7pm CT/ 8pm EST



SPECIAL GRIEF WORKSHOPS:



GRIEF & THE HOLIDAYS

Sat. Nov 2 & Sat. Dec 14
8:30am(PT) / 9:30am(MT) / 10:30am(CT) / 11:30am(ET) | On Zoom

No matter what you celebrate, it's important to know that you aren't alone during holidays. This virtual workshop is a way to get some support and helpful tips when grieving around the holiday season. Suggested Donation: \$20.



720-748-9908
info@heartlightcenter.org
www.heartlightcenter.org





TRAINING AND EDUCATION

UPCOMING EDUCATIONAL SIGNATURE SERIES:

HeartLight hosts experts to speak on various grief and loss topics throughout the year.
Seminars are presentational and all are invited to learn.



Program for Professionals Supporting Grieving Kids:

Healing Communities - Centering Families to Support Bereaved Youth

November 5th | 8-10am (PT)/ 9-11am (MST)/ 10-12pm (CT)/ 11-1pm (EST)

Program for Adults Supporting Grieving Kids:

Caring for Grieving Kids

November 5th | 5-6pm (PT)/ 6-7pm (MST)/ 7-8pm (CT)/ 8-9pm (EST)



FACING THE MOURNING FACILITATOR TRAINING:

Learn to facilitate our signature 4-session interactive support group open to all types of losses to bring to your community or organization.



Facing the Mourning Facilitator Training- For Professionals

Upcoming Dates: Fri. Nov. 15

Start Time: 10am PT/ 11am MST/ 12pm CT/ 1pm ET

Cost: \$85



RESOURCES:

Resources for those who have experienced a loss as well as professionals supporting someone who has experienced a loss. Learn more by scanning the QR code.

Recommended Grief Media:

- Book List
- Podcasts
- Websites
- Videos

HeartLight Academic Articles

- Help Someone who is Grieving
- Helpful Info About Grief
- Self-Care While Grieving
- Individual vs. Group Support
- Loss in the Work Place
- When Kids are Grieving



720-748-9908

info@heartlightcenter.org

www.heartlightcenter.org

Website





COMMUNITY GROUPS/EVENTS

Hope West Hospice-

Offers several support groups, to include, but not limited too:

- Drop-In Grief Support Group
- Mending Hearts 10-Week Grief Support Group
- Coffee for Men Support Group
- Caregiver Connections
- Angel Babies Support Group



Groups are open to anyone in the community, regardless of whether they had a loved one on hospice services.

To register call 970-257-2390.

To learn more about specific group offerings:
visit <https://www.hopewestco.org/grief-support/>.

Heartbeat Grand Junction-

Heartbeat exists to help survivors absorb the impact of the self-inflicted death, to offer comfort of empathy, understanding and to support each other toward a healthy resolution to the grief. www.heartbeatgj.com



Death Café-

Meets the 4th Wednesday of the month, 6:00pm at Colorado Craft Coffee & Beer House (1144 N. 12th St, Grand Junction). Join us for an evening that brings people together in a positive and safe setting for open conversation about all aspects of death, dying, and living. Not a support group or educational seminar, just a chance to talk about death in an effort to enhance life. Sponsored by Western Slope Grief Network Alliance. Free to Attend. Questions: westernslopeгна@gmail.com

International Survivors of Suicide Day:

Sat., Nov. 23 from 3:00-6:00pm, Martin Mortuary 550 North Ave, Grand Junction, CO 81501.
More details to come!



720-748-9908
info@heartlightcenter.org
www.heartlightcenter.org

